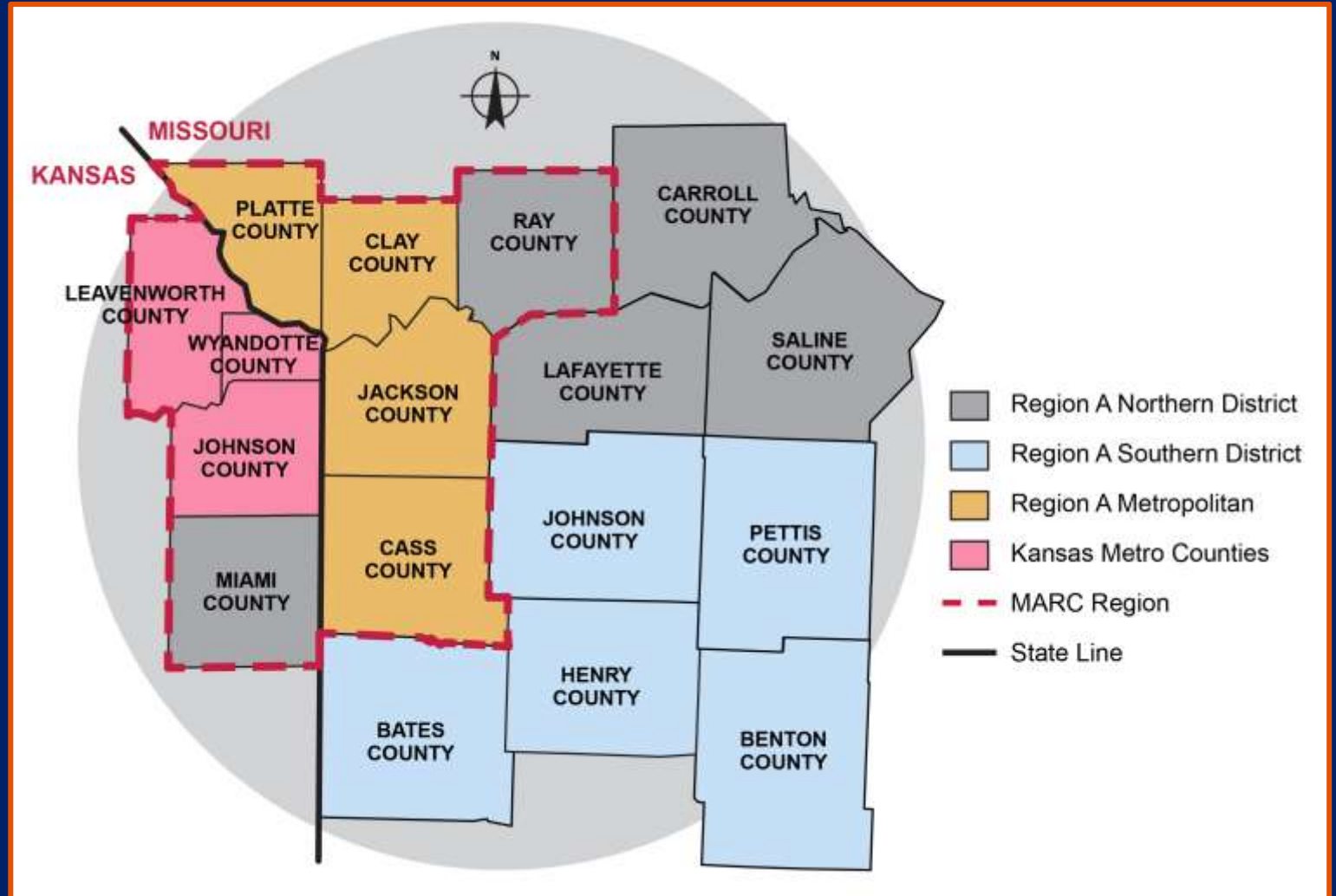




The Clinical Advisor and the Health Care Coalition

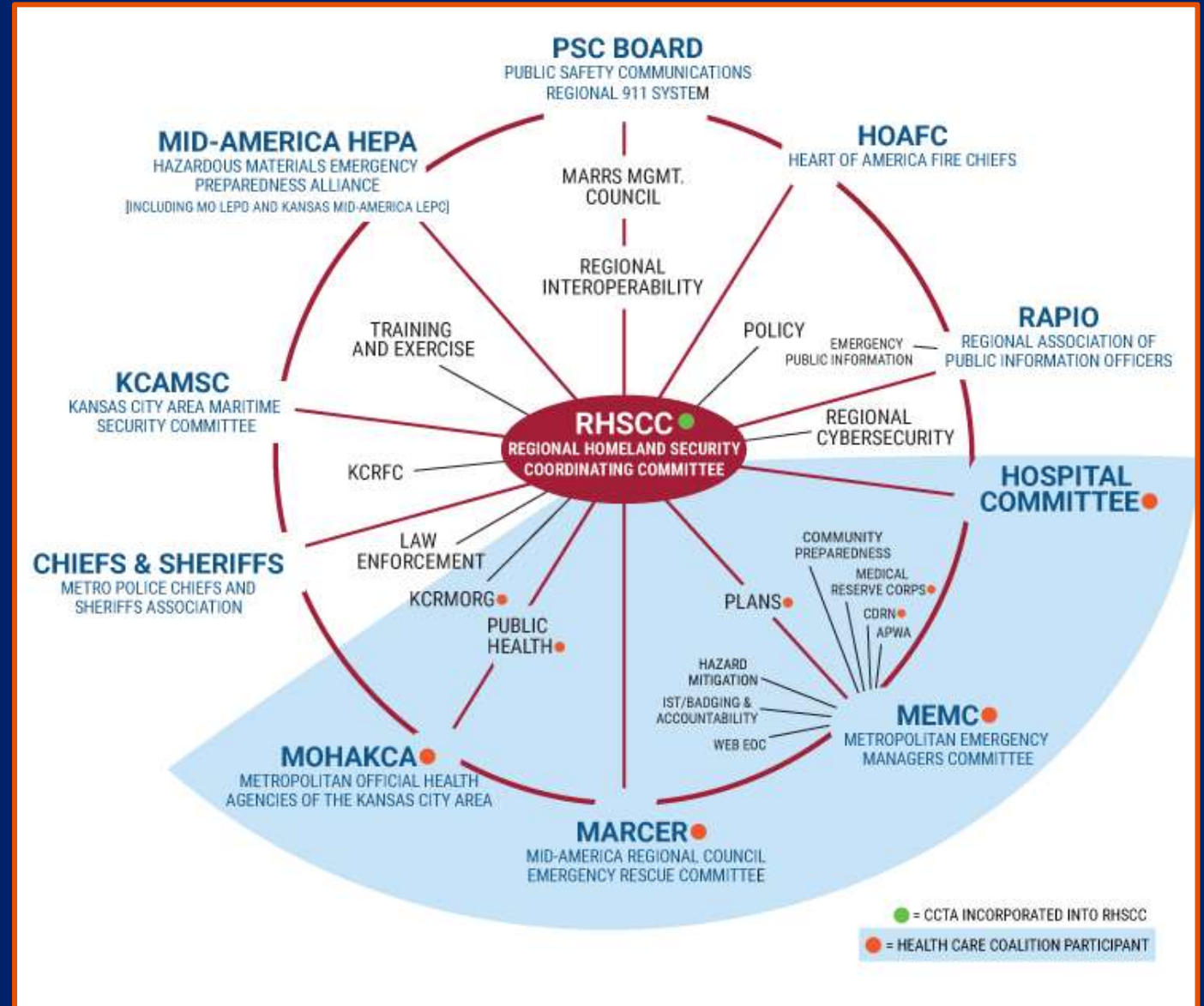
- **Dr. Michael Moncure, MARC HCC Clinical Advisor**
- **Dr. Jen Watts, MARC HCC Pediatric Clinical Advisor**
- **Jennifer Sutherlin, MPH, BSN, MARC Health & Medical Program Manager**
- **Steve Hoeger, MARC HCC Chair**

The MARC Region



MARC RHSCC Circle of Friends

The MARC Health Care Coalition functions as the health and medical arm of the Regional Homeland Security Coordinating Committee. This structure allows collaboration and coordination across disciplines and agencies to ensure inclusive planning and response.



MARC HCC Leadership Structure

- HCC Chair
- Hospital Leadership
 - Committee Co-chairs
 - Subcommittee Co-chairs
- Public Health Leadership
 - Metropolitan Official Health Agencies of the Kansas City Area (MOHAKCA)
 - Public Health Subcommittee Co-chairs
- Mass Fatality
 - Kansas City Regional Mortuary Operational Response Group (KCRMORG)
- Mid-America Regional Council Emergency Rescue (MARCER)
- Clinical Advisors
 - HCC Clinical Advisor
 - Pediatric Clinical Advisor
 - EMS Medical Directors
- Emergency Management
 - Metropolitan Emergency Managers Committee (MEMC) Co-chairs
 - Community Disaster Resiliency Network (CDRN)
 - Kansas City Regional Home Care Association (KCRHCA)
- Additional
 - Kansas City Regional Fusion Center
 - Medical Reserve Corps



Capability 1: Foundation
for Health Care and
Medical Readiness

Phase 1: Plan and Prepare

Objective 1: Establish and
Operationalize a Health
Care Coalition

Activity 3: Establish Health
Care Coalition Governance

**HHS ASPR-HPP
2019 funding
opportunity
announcement
language re:
Clinical Advisor**

Requirements

...individual(s) should be a physician, advanced practice provider, or registered nurse and should be from a lead or co-lead hospital or health care organization and be clinically active (i.e., works shifts/sees patients). Involvement in emergency services or response activities is preferred and knowledge of medical surgical issues and basic familiarity with chemical, biological, radiological, nuclear and explosives (CBRNE), trauma, burn, and pediatric emergency principles is required.





Clinical Advisor Role

Provide clinical leadership to the coalition and serve as a liaison between the coalition and medical directors/medical leadership at health care facilities, supporting entities (e.g., blood banks), and EMS agencies.

Clinical Advisor role (cont.)

Review and provide input on coalition plans, exercises, and educational activities to assure clinical accuracy and relevance.



Clinical Advisor role (cont.)

Act as an advocate
and resource for other
clinical staff to
encourage their
involvement and
participation in
coalition activities.



Clinical Advisor role (cont.)

Assure that the coalition mass casualty/surge plans provide for appropriate distribution (and re-distribution) of trauma patients to avoid overloading single centers whenever possible and work with health care facilities to understand their capabilities and capacity.





Clinical Advisor role (cont.)

Assure that subject matter experts are available and a process exists to support secondary transfer prioritization in specialty surge (e.g., burn, pediatric) mass casualty situations (i.e., identify which patients are a priority to transfer to specialty care centers when adequate transportation or inpatient resources are unavailable).

A hand is visible on the left side of the image, pointing towards the text. The background is a light blue and white pattern of interlocking puzzle pieces. The text is centered and reads:

**Clinical Advisors are
critical members of
the MARC HCC.**

Clinical Advisors & HPP Capabilities

Capability 1: Foundation for Health Care and Medical Readiness

Plan & Prepare

- Review and approve HCC Governance Documents and Preparedness Plan
- Coordination & communication with Hospital CMOs and CEOs
- Participate in state, region and federal meetings and events as requested

Train & Equip

- Provide input for and participate in regional training plans.

Exercise & Respond

- Participate in planning and execution of exercises.

Evaluate & Lessons Learned

- Participate in after-action review and improvement planning activities following exercises and real-world events
- Share best practices and lessons learned

Clinical Advisors & HPP Capabilities

Capability 2: Health Care and Medical Response Coordination

Plan & Prepare

- Review and approve HCC Response Plan
- Input and guidance for essential elements of information, hospital bed availability and high-volume processes

Train & Equip

- Review and provide input for external messaging

Exercise & Respond

- Serve as member or the Threat Assessment Team (TAT)
- Serve as conduit to Chief Medical Officers as needed
- Provide just-in-time clinical consultation and guidance

Clinical Advisors & HPP Capabilities

Capability 3: Continuity of Health Care Service Delivery

Plan & Prepare

- Assist in the identification of possible situation specific supply chain issues
- Provide input and validation for specialty surge annex plans

Train & Equip

- Provide guidance and expertise to help safeguard the health and wellbeing of the healthcare workforce.

Exercise & Respond

- Support ongoing improvement through lessons learned

Clinical Advisors & HPP Capabilities

Plan
&
Prepare

- Engage with HCC, State and Regional planning efforts for mass casualty incidents and Crisis Standards of Care

Capability 4: Medical Surge

Exercise
&
Respond

- Participate in patient movement exercises and activities including NDMS
- Engage and promote continued work with the Pediatric Pandemic Network



**MARC HCC Clinical
Advisor Perspective:
Michael Moncure, MD**



**MARC HCC Pediatric Clinical
Advisor Perspective:
Jennifer Watts, MD, MPH**

Discussion and questions



MARC-HCC

MID-AMERICA REGIONAL COUNCIL
HEALTH CARE COALITION

*Collaborating to Advance
Health Care System Resilience*

Contact:

Jennifer Sutherlin
jsutherlin@marc.org