



@r7dhre

### VISION

A self-sustaining ecosystem for regional healthcare preparedness, leveraging public and private resources inside and outside of traditional healthcare delivery organizations, ready for disasters and health emergencies.



# TOGETHER

We will create strategies & identify resources to support and enhance healthcare coalition, state, and regional response plans. Our philosophy is to build ecosystems for regional disaster health system response.



### OUR GOALS

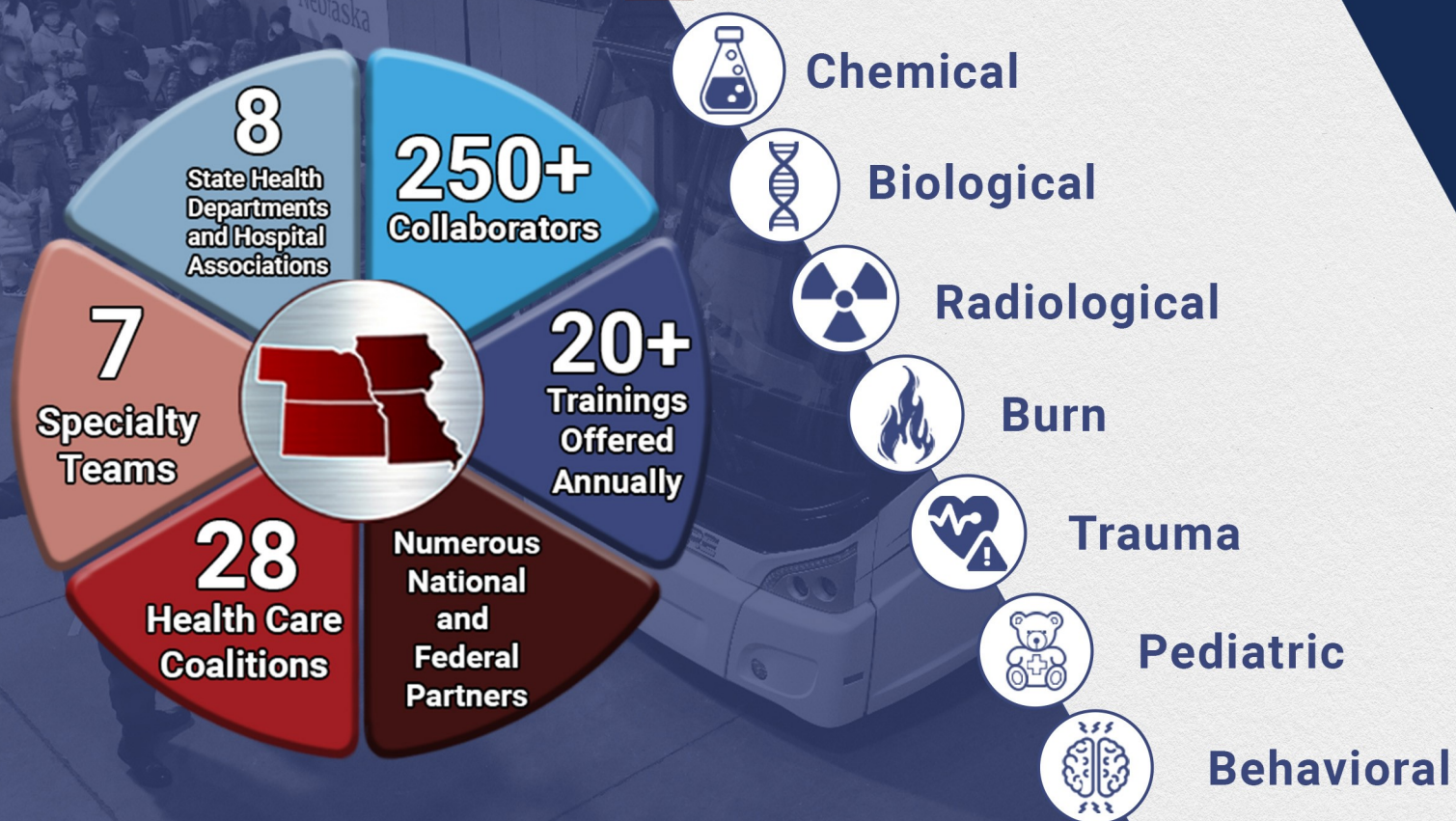
- ✓ Improve coordination and disaster capabilities within the region
- ✓ Enhance situational awareness
- ✓ Provide novel system solutions for health system and community response
- ✓ Build capacity and capability to respond to all hazard incidents to ultimately save lives

In 2018, the United States Department of Health and Human Services awarded the University of Nebraska Medical Center/ Nebraska Medicine one of two demonstration grants to develop a regional preparedness, all hazards health system. This grant came to be the R7DHRE and aims to identify strategies for enhancing surge capacity in large-scale disasters, both in rural and urban communities.

### WHAT WE DO

- ✓ Build multi-state partnerships for disaster health response
- ✓ Create cadre of R7 specialty subject matter experts and teams
- ✓ Facilitate regional education and training
- ✓ Support and engage in the community

R7DHRE readiness and response focus areas:



We build health response systems that exhibit the following capabilities:

- ✓ **Improve** statewide and regional situational awareness
- ✓ **Develop** readiness metrics and conduct exercises to test capabilities
- ✓ **Increase** statewide and regional medical surge capacity
- ✓ **Build** a partnership for disaster health response
- ✓ **Align** plans, policies, procedures related to clinical excellence in disasters

### HOW WE DO IT

*"The Region VII Disaster Response team serves as a convener to pull diverse groups of partners and collaborators together to build relationships and readiness strategies for whatever is next."*

- Shelly Schwedhelm, MSN, RN, NEA-BC - Executive Director



www.regionviidhre.com  
email: R7DHRE@unmc.edu